



OXSEED Transformation Server Version 2.x User Guide and Reference

**OXS.ECO Transformation Server Version 2.5 User
Guide and Reference**

Print Date: 2025-01-06

Maas Holding GmbH

Copyright © 2019 Maas Holding GmbH, Germany

All rights reserved. This publication and the concepts, solutions, programs described are copyright protected products of Maas Holding GmbH, Filderstadt, Federal Republic of Germany. This publication is subject to change or correction without prior notice.

Maas Holding GmbH will not be held liable for any damages caused or alleged to be caused either directly or indirectly by this publication.

No part of this documentation may be reproduced, stored in a retrieval system or transmitted in any form or by any means, without the prior written permission of Maas Holding GmbH.

Table of Contents

1	Preface.....	6
1.1	About the OXS.ECO Transformation Server User's Guide	6
1.1.1	Who Should Read this Document	6
1.1.2	What's in this Document	6
1.1.3	Where to Find Additional Information.....	6
1.2	Important Notices.....	7
1.2.1	Test thoroughly!.....	7
1.3	History	7
2	Introduction	9
3	User's Guide and Reference	10
3.1	Prerequisites	10
3.1.1	System Prerequisites	10
3.1.2	Software Prerequisites	10
3.2	Installing the OXS.ECO Transformation Server	11
3.2.1	Installing OTS	12
3.3	Configuring the OXS.ECO Transformation Server	13
3.3.1	Configuration	13
3.4	Plugins	13
3.4.1	oxsnps-afp2any	14
3.4.2	oxsnps-html2any	14
3.4.3	oxsnps-msoffice2any	15
3.4.4	oxsnps-pdf2pdf.....	17
3.4.5	oxsnps-soap	17
3.5	Starting / Stopping the OXS.ECO Transformation Server	30
3.6	About Splitting OXS.ECO Transformation Server Log Files	32
3.7	Testing the OXS.ECO Transformation Server	33
3.8	Updating the OXS.ECO Transformation Server and Plugins.....	34
4	List of public URLs	35
	List of Figures	36

OXS.ECO Transformation Server Version 2.5 User Guide and Reference property.(Version)

List of Tables	37
Index	38

1 Preface

This preface offers

- a short introduction to the OXS.ECO Transformation Server (OTS)
- information about who should read that document, where to find additional information and whom to contact for further issues
- information about the content of that document
- notices to be aware of before using the OXS.ECO Transformation Server

1.1 About the OXS.ECO Transformation Server User's Guide

The OXS.ECO Transformation Server (OTS) is an unified server meant to meet all transformation requirements. It accepts transformation requests as HTTP or SOAP. Transformation services can be plugged in OTS.

1.1.1 Who Should Read this Document

This document is intended for all users of OTS. To use OTS, it is sufficient to set up its environment and the configuration files. Users who need to customize OTS will find information on how to do this in forthcoming chapters.

1.1.2 What's in this Document

This document is organized into the following chapters:

- This preface with an overview of the new features of OXS.ECO Transformation Server Version 2.x and some important notices
- An Introduction to the OXS.ECO Transformation Server, its functionality and possible application scenarios
- The OXS.ECO Transformation Server User's Guide, which includes information about installing and configuring it for your application, general information on how to run it, and how to use basic processing features

1.1.3 Where to Find Additional Information

For more information about

- Node.js: refer to <http://nodejs.org>
- Apache HTTP Server: refer to <http://httpd.apache.org>
- Java: refer to <https://www.oracle.com/java/>

1.1.3.1 Whom to Contact

This manual provides the information you need to get started with OXS.ECO Transformation Server.

Maas Holding GmbH offers professional services and consulting related to the development and deployment of OXS.ECO Transformation Server-based solutions.

For more information, please visit our Web site at www.maas.de

or contact us via: E-mail: support@maas.de

OXS.ECO Transformation Server Version 2.5 User Guide and Reference property.(Version)

Preface -About the OXS.ECO Transformation Server User's Guide

Maas Holding GmbH / Print Date: 2025-01-06

1.2 Important Notices

Please use the OXS.ECO Transformation Server and components with great care. Incorrect settings can affect the transformation results. In the worst case, documents might become useless for archiving purposes.

We therefore recommend:

1.2.1 Test thoroughly!

You should thoroughly test the run time parameters and resources against all of your transformation scenarios.

1.3 History

Version	Date	Description
2.5.3	06.01.2025	Updated to use Node.js v22.11.0.
2.5	20.10.2022	Update OTS to Version 2.5
2.0.2	14.07.2015	Migrated plugins to oxsnps v2.0.2
2.0.0.1u1	30.09.2014	Added information about plugin installation and configuration. Modified OTS installation steps
2.0.0.0	18.09.2014	Added office2any, pdf2securepdf, pdf2mergepdf transformation plugins
1.3.5u18	06.08.2014	Added Update to V1.3.5u18 Section Added the List of available URLs Chapter
1.3.5u13	18.07.2014	Added Update to V1.3.5u13 Section
1.3.5u10	10.07.2014	Added URL <a href="http://<server>:<port>/explore/segmentation">http://<server>:<port>/explore/segmentation Added archivConf XML to JSON conversion
1.3.5u4	07.07.2014	Added Update to V1.3.5u4 Section Added forever module
1.3.5u3	03.07.2014	Added Update to V1.3.5u3 Section
1.3.5u2	30.06.2014	Added OTS port to OTS Configuration Added Update to V1.3.5u2 Section
1.3.5u1	26.06.2014	Added Update to V1.3.5u1 Section
1.3.5	25.06.2014	Added Update to V1.3.5 Section
1.3.4	10.06.2014	Installation Issues Added URL <a href="http://<server>:<port>/version">http://<server>:<port>/version

OXS.ECO Transformation Server Version 2.5 User Guide and Reference property.(Version)

Preface -History

Maas Holding GmbH / Print Date: 2025-01-06

		Added URL http://<server>:<port>/log Added URL http://<server>:<port>/doc Added URL http://<server>:<port>/segmentation/<infoType>
1.3.3	30.05.2014	Initial Release
1.3.2 alpha	18.03.2014	Alpha version delivered

2 Introduction

OXS.ECO Transformation Server (OTS) is an unified server meant to meet all transformation requirements. To do so any transformation request is passed as SOAP, JSON, HTML through HTTP to OTS. The transformation will in turn be processed by OTS and appropriate actions will be taken to transform and return the result of the transformation.

Result will be, based on the request, either:

- sent back as SOAP, JSON, HTML response through HTTP
- stored on a file system. In that case, some status will be sent back as SOAP, JSON, HTML response through HTTP

3 User's Guide and Reference

3.1 Prerequisites

List of Prerequisites that are required for the installation of the OXS.ECO Transformation Server

- System Prerequisites
- Software Prerequisites

For the installation and configuration of the Prerequisites, **admin privileges** are required.

3.1.1 System Prerequisites

The OXS.ECO Transformation Server is a 64-bit application that should run on any Linux systems matching the following requirements:

Description	Value
Operating System	>= CentOS Stream 9
Architecture	64 bit
Number of Cores	>= 2
Memory	>= 2 GB

3.1.2 Software Prerequisites

This chapter describes the list of the software packages that have to be installed in order to run OTS.

- Node.js 22.11.0
- Java Development Kit (JDK) 11
- python 3

3.1.2.1 Installation of the Node.js

Node.js is a platform for easily building fast, scalable network applications. Node.js uses an event-driven, non-blocking I/O model that makes it lightweight and efficient.

To install Node.js 22 on CentOS refer to <https://nodejs.org/en/download/package-manager/#centos-fedora-and-red-hat-enterprise-linux>

To check which node.js version has been installed, execute the following command.

OXS.ECO Transformation Server Version 2.5 User Guide and Reference property.(Version)

User's Guide and Reference -Prerequisites

Maas Holding GmbH / Print Date: 2025-01-06

```
node -v
```

Code Block 1 node.js Version

It should return a version equal or greater than 22.11.0.

Also check that npm has been installed by executing the following command.

```
npm -v
```

Code Block 2 npm Version

It should return a version equal or greater than 10.9.0.

3.1.2.2 Installation of the JDK 11

Download and install the Oracle JDK 11 package from <https://www.oracle.com/java/>

Check whether the installed Java version. To do so, run the following command.

```
java -version
```

It should return a versions greater or equal to 11.0.0.

3.1.2.3 Installation of python 3

OXSEED Transformation Server (OTS) needs python version 3. Download and install python version 3

To check which python version has been installed, execute the following command.

```
python3 --version
```

It should return a version 2.7.x as given below

```
Python 3.8.10
```

OTS requires python 3 not python 2.x in order to install java node.js modules for node.js v22.11.0.

3.2 Installing the OXS.ECO Transformation Server

This section describes the OXS.ECO Transformation Server Installation.

OXS.ECO Transformation Server Version 2.5 User Guide and Reference `property.(Version)`

User's Guide and Reference -Installing the OXS.ECO Transformation Server

In that document, the /opt/OTS directory is used as default installation directory if not otherwise specified. Moreover this document assumes that the downloaded files reside in the ~/Downloads directory.

3.2.1 Installing OTS

In order to install OTS, first download the OTS package and then execute the following commands.

```
sudo mkdir -p /opt/OTS
sudo cp ~/Downloads/OTSServer_2.x.x_linux_x64.tgz /opt/OTS
cd /opt/OTS
sudo chmod a+x OTSServer_2.x.x_linux_x64.tgz
sudo tar xvf OTSServer_2.x.x_linux_x64.tgz
```

Code Block 3 OTS installation

This will create the following directories within /opt/OTS:

Directory Name	Remarks
conf	Contains the OTS configuration.
doc	Contains the OTS documentation.
lib	Contains jar files needed to call msoffice java services.
log	Directory to save log files.
node_modules	Contains OTS Modules and Plugins
public	Static files to be served by OTS

Once the installation is over, delete the tar file

```
sudo rm OTSServer_2.x.x_linux_x64.tgz
```

OTS also requires PM2 module that helps to keep applications alive for ever, to reload them without downtime.

```
npm install pm2 -g --unsafe-perm
```

Code Block 4 Install PM2 node.js module

PM2 Information

Refer to <https://github.com/Unitech/PM2/> get more information about PM2

3.2.1.1 wkhtmltopdf Installation

HTML to PDF/TIF transformations requires the wkhtmltopdf tool. Download wkhtmltopdf 0.12.5 from <http://wkhtmltopdf.org/downloads.html> and Install it.

3.3 Configuring the OXS.ECO Transformation Server

This section describes the OXS.ECO Transformation Server Configuration.

The OXS.ECO Transformation Server Configuration is maintained in the `/opt/OTS/conf/server-conf.js` file. This file is a JS file. It contains all the OTS settings.

In order to run the OXS.ECO Transformation Server you will need to configure `conf/server-conf.js` file with proper values.

3.3.1 Configuration

Define the port to listen to, the logging level (should be INFO in production), set the name of the log, temp, upload and backup directories. Default log directory is `"/var/log/nps"`. Default log file is `"/var/log/nps/npsServer.log"`. Default temp directory is `"/tmp/nps"`. The upload directory is used to store the releases to be deployed. The backup directory is used to store the backup that will be done before deploying the new release. Available logging levels are DEBUG, INFO, WARN and ERROR.

```
module.exports = {
  "port":      80,                // OTS port to listen to
  "logDir":    "/var/log/nps",    // Log dir
  "log": {
    "level": 'INFO',             // Log Levels are DEBUG, INFO, WARN and ERROR
    "appenders": [
      {
        "type": "console",
        "layout": {
          "type": "pattern",
          "pattern": "[%d] [%p] %c - %m"
        }
      }
    ],
    "replaceConsole": true
  },
  "tempDir":   "/tmp/nps",
  "uploadDir": "uploads",
  "backupDir": "backups",
  "pluginDirs": ["node_modules"]
}
```

Code Block 5 npsServer Configuration

3.4 Plugins

This section describes the plugins available to the OXSEED Transformation Server and their configuration.

OXS.ECO Transformation Server Version 2.5 User Guide and Reference property.(Version)

User's Guide and Reference -Plugins

3.4.1 oxsnps-afp2any

The oxsnps-afp2any plugin allows OTS to access the transformations provided by the AFP2web Server. Its configuration is maintained in /opt/OTS/node-modules/oxsnps-afp2any/conf/oxsnps-afp2any.js.

You will mostly have to set in that configuration the AFP2web Server 's IP Address and Port.

The oxsnps-afp2any.js file describes the plugin configuration. Here are some of the properties contained in that file.

Property Name	Description
desc	Plugin description
log	Logging Information
routes	Array of Routes. A Route describes the URI of the service ("path" property), the HTTP method to use for calling the service ("method" property) and the name of the service ("service " property) to which the request must be routed to
name	AFP2web Server IP Address
port	AFP2web Server Port
a2wslogging	Turn AFP2web Server Logging Level; possible values are: DEBUG, INFO, WARN and ERROR. If commented, the log level of the plugin will be passed to the AFP2web Server

For further details about the AFP2web Server refer to AFP2web Server User Guide and Reference.

3.4.2 oxsnps-html2any

The oxsnps-html2any plugin provides html to pdf and tif transformations. Its configuration is maintained in /opt/OTS/oxsnps-html2any/conf/oxsnps-html2any.js.

The oxsnps-html2any.js file describes the plugin configuration. Here are some of the properties contained in that file.

Property Name	Description
desc	Plugin description
log	Logging Information

OXS.ECO Transformation Server Version 2.5 User Guide and Reference property.(Version)

User's Guide and Reference -Plugins

Maas Holding GmbH / Print Date: 2025-01-06

routes	Array of Routes. A Route describes the URI of the service ("path" property), the HTTP method to use for calling the service ("method" property) and the name of the service ("service " property) to which the request must be routed to
--------	--

3.4.3 oxsnps-msoffice2any

The oxsnps-msoffice2any plugin provides transformations of Microsoft Office documents. Its configuration is maintained in following files.

1. /opt/OTS/node-modules/oxsnps-msoffice2any/conf/oxsnps-msoffice2any.js: It is a JS file describing the plugin configuration
2. /opt/OTS/node-modules/oxsnps-msoffice2any/conf/dcom.js: It is a JSON file describing the DCOM Server configuration
3. /opt/OTS/node-modules/oxsnps-msoffice2any/conf/log4j.xml: It contains log configuration for the java services.

The oxsnps-msoffice2any.js file describes the plugin configuration. Here are some of the properties contained in that file.

Property Name	Description
desc	Plugin description
log	Logging Information
routes	Array of Routes. A Route describes the URI of the service ("path" property), the HTTP method to use for calling the service ("method" property) and the name of the service ("service " property) to which the request must be routed to

3.4.3.1 dcom.js

The dcom.js file describes the configuration of the DCOM server. It contains following properties.

Property Name	Description
PDFCreatorApplication	Name of the PDF Creator application.
PDFProducer	Tool or library used to generate PDF file.
dcomDomain	Domain name or host name of the DCOM server
dcomHost	IP Address or name of the DCOM server
dcomUser	User that has permissions to access the DCOM server

OXS.ECO Transformation Server Version 2.5 User Guide and Reference property.(Version)

User's Guide and Reference -Plugins

Maas Holding GmbH / Print Date: 2025-01-06

dcomPassword	Password of DCOM user
dcomShare	<p>URL to access the DCOM share directory</p> <p>Example 1: Share directory if DCOM server runs in different system than OTS server</p> <ul style="list-style-type: none"> • "dcomShare": "smb://172.15.0.28/tmp/" <p>Example 2: Share directory if OTS runs on Windows and DCOM server runs locally on the same system as OTS server</p> <ul style="list-style-type: none"> • "dcomShare": "file:///c:/OCTP1.2/temp/"
numberWordAppInPool	Number of word applications to be started
numberExcelAppInPool	Number of excel applications to be started
horizontalPrintQuality	Horizontal print quality of the TIFF transformation
verticalPrintQuality	Vertical print quality of the TIFF transformation
timeout	Transformation Time out in milliseconds
<pre> { "PDFCreatorApplication": "OTS v2.0.0.2", "PDFProducer": "Maas PDF Library v3.4", "DCOM": { "dcomDomain": <Domain name or host name of the DCOM server>, "dcomHost": <IP Address or name of the DCOM server>, "dcomUser": <User that has permissions to access the DCOM server>, "dcomPassword": <Password of DCOM user>, "dcomShare": <URL to access the DCOM share directory>, "numberWordAppInPool": <Number of word applications to be started>, "numberExcelAppInPool": <Number of excel applications to be started>, "horizontalPrintQuality": <Horizontal print quality of the TIFF transformation>, "verticalPrintQuality": <Vertical print quality of the TIFF transformation>, "timeout": <Transformation Time out in milliseconds> } } </pre>	

Code Block 6 dcom.json

For further details about the DCOM Server refer to the Configuring_DCOM_XP_2003.pdf and Office2Any Server SetUp-23 Sep 2008.pdf documents in the 'doc' directory..

3.4.3.2 log4j.xml:

The log4j.xml file describes the log configuration of the java services. It contains following properties. The name of the log file for java services is specified in the "File" <param> element of the 'FILE' <appender> as shown below.

```
<log4j:configuration xmlns:log4j="http://jakarta.apache.org/log4j/"
debug="false">
    .....
    <appender name="FILE" class="org.apache.log4j.FileAppender">
        <!-- 'threshold' defines log level. Allowed values are
debug|info|warn|error -->
        <param name="threshold" value="debug"/>
        <param name="File" value="/var/log/nps/javaServices.log"/>
        <layout class="org.apache.log4j.PatternLayout">
            <param name="ConversionPattern" value="%d{yyyy-MM-dd HH:mm:ss.SSS}
[%-5p] %-25.25c{1} %4L - %m%n"/>
        </layout>
    </appender>
    .....
</log4j:configuration>
```

Code Block 7 log4j.xml

3.4.4 oxsnps-pdf2pdf

The oxsnps-pdf2pdf plugin provides transformations to:

- secure a PDF Document
- merge and secure the merged PDF document

The oxsnps-pdf2pdf.js file describes the plugin configuration. Here are some of the properties contained in that file.

Property Name	Description
desc	Plugin description
log	Logging Information
routes	Array of Routes. A Route describes the URI of the service ("path" property), the HTTP method to use for calling the service ("method" property) and the name of the service ("service " property) to which the request must be routed to

3.4.5 oxsnps-soap

The oxsnps-soap plugin adds SOAP support to OTS. It parses SOAP requests, delegates them to the proper functional plugin either oxsnps-afp2any, oxsnps-html2any, oxsnps-msoffice2any or oxsnps-pdf2pdf and sends the SOAP response back to the caller. Its configuration is maintained in /opt/OTS/node-modules/oxsnps-soap/conf/oxsnps-soap.js.

The oxsnps-soap.js is a JS file. Here are some of the properties contained in that file.

OXS.ECO Transformation Server Version 2.5 User Guide and Reference property.(Version)

User's Guide and Reference -Plugins

Property Name	Description
desc	Plugin description
log	Logging Information
routes	Array of Routes. A Route describes the URI of the service ("path" property), the HTTP method to use for calling the service ("method" property) and the name of the service ("service " property) to which the request must be routed to

3.4.5.1 SOAP Interface

This chapter describes the SOAP interface of the OXS.ECO Transformation Server.

Transformation WSDL

Here is the SOAP Transformation WSDL

```
<?xml version="1.0" encoding="UTF-8"?>
<wsdl:definitions
  xmlns:wsdl="http://schemas.xmlsoap.org/wsdl/"
  xmlns:soap="http://schemas.xmlsoap.org/wsdl/soap/"
  xmlns:tns="http://oxseed.com/services/"
  xmlns:wsdlsoap="http://schemas.xmlsoap.org/wsdl/soap/"
  xmlns:xmime="http://www.w3.org/2005/05/xmlmime"
  xmlns:xsd="http://www.w3.org/2001/XMLSchema"
  targetNamespace="http://oxseed.com/services/">
  <wsdl:types>
    <xsd:schema
      attributeFormDefault="qualified"
      elementFormDefault="unqualified"
      targetNamespace="http://oxseed.com/services/">
      <xsd:simpleType name="ResponseStatus">
        <xsd:restriction base="xsd:string">
          <xsd:enumeration value="Done"/>
          <xsd:enumeration value="Error"/>
          <xsd:enumeration value="Working"/>
        </xsd:restriction>
      </xsd:simpleType>

      <xsd:element name="ResponseMessage">
        <xsd:complexType>
          <xsd:sequence>
            <xsd:element name="responseData"
              type="xsd:base64Binary"/>
            <xsd:element name="responseStatus"
              type="tns:ResponseStatus"/>
            <xsd:element name="responseStatusDescription"
              type="xsd:string"/>
          </xsd:sequence>
        </xsd:complexType>
      </xsd:element>
    </xsd:schema>
  </wsdl:types>
</wsdl:definitions>
```

```

<xsd:complexType name="InputObject">
  <xsd:sequence>
    <xsd:element name="source" type="xsd:string"/>
    <xsd:element name="ownerpw" type="xsd:string"/>
    <xsd:element name="userpw" type="xsd:string"/>
  </xsd:sequence>
</xsd:complexType>

<xsd:complexType name="OutputObject">
  <xsd:sequence>
    <xsd:element name="type" type="xsd:string"/>
    <xsd:element name="ownerpw" type="xsd:string"/>
    <xsd:element name="userpw" type="xsd:string"/>
    <xsd:element name="flags" type="xsd:string"/>
  </xsd:sequence>
</xsd:complexType>

<xsd:element name="RequestMergeMessage">
  <xsd:complexType>
    <xsd:sequence>
      <xsd:element maxOccurs="unbounded" minOccurs="1"
name="inputList" type="tns:InputObject"/>
      <xsd:element name="output" type="tns:OutputObject"/>
    </xsd:sequence>
  </xsd:complexType>
</xsd:element>

<xsd:complexType name="InputObjectTransform">
  <xsd:complexContent>
    <xsd:extension base="tns:InputObject">
      <xsd:sequence>
        <xsd:element name="document"
type="xsd:base64Binary"/>
        <xsd:element name="type" type="xsd:string"/>
      </xsd:sequence>
    </xsd:extension>
  </xsd:complexContent>
</xsd:complexType>

<xsd:element name="RequestTransformMessage">
  <xsd:complexType>
    <xsd:sequence>
      <xsd:element name="input"
type="tns:InputObjectTransform"/>
      <xsd:element name="output" type="tns:OutputObject"/>
    </xsd:sequence>
  </xsd:complexType>
</xsd:element>
</xsd:schema>
</wsdl:types>

<wsdl:message name="requestMergeMsg">
  <wsdl:part element="tns:RequestMergeMessage" name="request">
  </wsdl:part>
</wsdl:message>

<wsdl:message name="requestTransformMsg">
  <wsdl:part element="tns:RequestTransformMessage" name="request">
  </wsdl:part>
</wsdl:message>

<wsdl:message name="responseMsg">
  <wsdl:part element="tns:ResponseMessage" name="result">

```

```

    </wsdl:part>
  </wsdl:message>

  <wsdl:portType name="TransformInterface">
    <wsdl:operation name="merge">
      <wsdl:input message="tns:requestMergeMsg">
    </wsdl:input>
      <wsdl:output message="tns:responseMsg">
    </wsdl:output>
    </wsdl:operation>
    <wsdl:operation name="transform">
      <wsdl:input message="tns:requestTransformMsg">
    </wsdl:input>
      <wsdl:output message="tns:responseMsg">
    </wsdl:output>
    </wsdl:operation>
  </wsdl:portType>

  <wsdl:binding name="TransformServicePortBinding" type="tns:TransformInterface">
    <soap:binding style="document"
transport="http://schemas.xmlsoap.org/soap/http"/>
    <wsdl:operation name="merge">
      <soap:operation soapAction=""/>
      <wsdl:input>
        <soap:body use="literal"/>
      </wsdl:input>
      <wsdl:output>
        <soap:body use="literal"/>
      </wsdl:output>
    </wsdl:operation>
    <wsdl:operation name="transform">
      <soap:operation soapAction=""/>
      <wsdl:input>
        <soap:body use="literal"/>
      </wsdl:input>
      <wsdl:output>
        <soap:body use="literal"/>
      </wsdl:output>
    </wsdl:operation>
  </wsdl:binding>

  <wsdl:service name="TransformService">
    <wsdl:port binding="tns:TransformServicePortBinding"
name="TransformServicePort">
      <soap:address location="http://0.0.0.0:8193/TransformService/">
    </soap:address>
      <soap:address location="refer service urls below"/>
    </soap:address>
    </wsdl:port>
  </wsdl:service>
</wsdl:definitions>

```

Code Block 8 Service WSDL

Following chapters describe some sample SOAP requests and their response for different transformations.

SOAP Request

In order to run the AFP2Any transformation, such a SOAP Request has to be sent to OTS:

OXS.ECO Transformation Server Version 2.5 User Guide and Reference property.(Version)

User's Guide and Reference -Plugins

Maas Holding GmbH / Print Date: 2025-01-06

```

<?xml version='1.0' encoding='UTF-8'?>
<soapenv:Envelope xmlns:soapenv="http://schemas.xmlsoap.org/soap/envelope/">
  <soapenv:Header/>
  <soapenv:Body>
    <ns1:transform xmlns:ns1="http://oxseed.com/services/">
      <ns1:RequestTransformMessage>
        <input xmlns:xsi="http://www.w3.org/2001/XMLSchema-instance"
xsi:type="ns1:InputObjectTransform">

          <document>L3Zhci9saWIvYXBhY2hlMi9kYXRhL3NhbXBsZXMvYmlnZmlsZXRlc3QuYWZw</docum
ent>

          <type>afp|bmp|pcx|png|jpg|tif</type>
        </input>
        <output>
          <type>OutputType</type>
          <ownerpw>oxdoxd</ownerpw>
          <userpw>oxd</userpw>

        </output>
      </ns1:RequestTransformMessage>
    </ns1:transform>
  </soapenv:Body>
</soapenv:Envelope>

```

Code Block 9 AFP2Any Request

where

- <input><document> is data of the input pdf document, encoded in base64.
- <input><type> is type of input document. Refer to "Input/Output Parameter Types" table below.
- <output><type> is type of output document. Refer to "Input/Output Parameter Types" table below.
- <output><ownerpw> is owner password of the output pdf document. Applicable only for PDF output type.
- <output><userpw> is user password of the output pdf document. Applicable only for PDF output type.

Input/Output Parameter Types

"any" input type means one of the following input types AFP, PTOCA(MO:DCA IS1/2), BMP, PCX, PNG, JPG, TIF

Conversion	Input Type	Output Type
any2afp (Color)	any	afp
any2pdf (Color)	any	pdf
any2tif (B&W)	any	tif_bw
pdf2afp (Color)	pdf	afp
pdf2afp (Grayscale)	pdf	afp_gr
pdf2afp (B&W)	pdf	afp_bw

pdf2tif (Color)	pdf	tif
pdf2tif (B&W)	pdf	tif_bw
gif2pdf (Color)	gif	pdf
gif2tif_bw (B&W)	gif	tif_bw
gif2tif (Color)	gif	tif
gif2afp (Color)	gif	afp
txt2pdf (Color)	txt	pdf

SOAP Response

The output should look as follow.

```
<soap:Envelope
  xmlns:soap="http://schemas.xmlsoap.org/soap/envelope/"
  xmlns:xsi="http://www.w3.org/2001/XMLSchema-instance"
  xmlns:xsd="http://www.w3.org/2001/XMLSchema">
  <soap:Header/>
  <soap:Body>
    <ox:ResponseMessage xmlns:ox="http://oxseed.com/services/">
      <responseData>JVBERi0xLjIKJdTBweIKMS</responseData>
      <responseStatus>Done|Error</responseStatus>
      <responseStatusDescription/>
    </ox:ResponseMessage>
  </soap:Body>
</soap:Envelope>
```

Code Block 10 AFP2Any Response

where

- <responseData> contains the output document data encoded in base64, in case of successful transformation.
- <responseStatus> contains the status of transformation. Possible values are 'Done' or 'Error'.
- <responseStatusDescription> contains the error description.

SOAP Request

In order to run the Office2Any transformation, such a SOAP Request has to be sent to OTS:

```
<?xml version='1.0' encoding='UTF-8'?>
<soapenv:Envelope xmlns:soapenv="http://schemas.xmlsoap.org/soap/envelope/">
  <soapenv:Header/>
```

OXS.ECO Transformation Server Version 2.5 User Guide and Reference property.(Version)

User's Guide and Reference -Plugins

Maas Holding GmbH / Print Date: 2025-01-06

```

        <soapenv:Body>
          <ns1:transform xmlns:ns1="http://oxseed.com/services/">
            <ns1:RequestTransformMessage>
              <input xmlns:xsi="http://www.w3.org/2001/XMLSchema-instance"
xsi:type="ns1:InputObjectTransform">
                <ownerpw>mhtml</ownerpw>
                <userpw>mht</userpw>

                <document>A3ZYci9saWIvYXBhY2hlMi9kYXRhL3NhbXBsZXMvYmlnZmlsZXRLc3QuYWZw</docum
ent>

                <type>InputType</type>
              </input>
              <output>
                <type>OutputType</type>
              </output>
            </ns1:RequestTransformMessage>
          </ns1:transform>
        </soapenv:Body>
      </soapenv:Envelope>
    </soapenv:Header/>

```

Code Block 11 Office2any Request

where

- <input><ownerpw> is owner password of the input document.
- <input><userpw> is user password of the input document.
- <input><document> is data of the input document, encoded in base64.
- <input><type> is type of input document. Refer to "Input/Output Parameter Types" table below.
- <output><type> is type of output document. Refer to "Input/Output Parameter Types" table below.

Input/Output Parameter Types

Conversion	Input Type	Output Type
Ms Office word to PDF Ms Office word 2007 to PDF	word	pdf
Html to PDF	mht	pdf
"Html information presented like table format" to PDF	html	pdf
RTF to PDF	rtf	pdf
Ms Excel to PDF Ms Excel 2007 to PDF	excel	pdf
Ms Office word to TIF Ms Office word 2007 to TIF	word	tif

Ms Office word to TIF (BW) Ms Office word 2007 to TIF (BW)	word	tif_bw
RTF to TIFF	rtf	tif
RTF to TIFF (BW)	rtf	tif_bw
Ms Excel to TIF Ms Excel 2007 to TIF	excel	tif
Ms Excel to TIF (BW) Ms Excel 2007 to TIF (BW)	excel	tif_bw

SOAP Response

The output should look as follows:

```
<soap:Envelope
  xmlns:soap="http://schemas.xmlsoap.org/soap/envelope/"
  xmlns:xsi="http://www.w3.org/2001/XMLSchema-instance"
  xmlns:xsd="http://www.w3.org/2001/XMLSchema">
  <soap:Header/>
  <soap:Body>
    <ox:ResponseMessage xmlns:ox="http://oxseed.com/services/">
      <responseData>Z3H7JVBERi0xLjIKJdTBweIKMS</responseData>
      <responseStatus>Done|Error</responseStatus>
      <responseStatusDescription/>
    </ox:ResponseMessage>
  </soap:Body>
</soap:Envelope>
```

Code Block 12 Office2any Response

where

- <responseData> contains the output document data encoded in base64, in case of successful transformation.
- <responseStatus> contains the status of transformation. Possible values are 'Done' or 'Error'.
- <responseStatusDescription> contains the error description.

SOAP Request

In order to run the PDF Secure transformation, such a SOAP Request has to be sent to OTS:

```
<?xml version='1.0' encoding='UTF-8'?>
<soapenv:Envelope xmlns:soapenv="http://schemas.xmlsoap.org/soap/envelope/">
```

OXS.ECO Transformation Server Version 2.5 User Guide and Reference property.(Version)

User's Guide and Reference -Plugins

Maas Holding GmbH / Print Date: 2025-01-06


```

        <soapenv:Header/>
        <soapenv:Body>
            <ns1:transform xmlns:ns1="http://oxseed.com/services/">
                <ns1:RequestTransformMessage>
                    <input xmlns:xsi="http://www.w3.org/2001/XMLSchema-instance"
xsi:type="ns1:InputObjectTransform">
                        <ownerpw>mhtmht</ownerpw>
                        <userpw>mht</userpw>

                    <document>F3Thci9saWIvYXBhY2hlMi9kYXRhL3NhbXBsZXMvYmlnZmlsZXRLc3QuYWZw</docum
ent>

                    <type>pdf</type>
                </input>
                <output>
                    <type>pdf</type>
                    <ownerpw>oxdoxd</ownerpw>
                    <userpw>oxd</userpw>
                    <flags>1|2|3|4|5|6</flags>

                </output>
            </ns1:RequestTransformMessage>
        </ns1:transform>
    </soapenv:Body>
</soapenv:Envelope>

```

Code Block 13 pdf2securepdf Request

where

- <input><ownerpw> is owner password of the input pdf document.
- <input><userpw> is user password of the input pdf document.
- <input><document> is data of the input pdf document, encoded in base64.
- <input><type> is always 'pdf'.
- <outut><type> is always 'pdf'.
- <output><ownerpw> is owner password of the output pdf document.
- <output><userpw> is user password of the output pdf document.
- <output><flas> is permission flags applied on output pdf document. Values are separated by '|'. Refer 'Permission Flags' table below.

Permission Flags

Flag	Description
0	Disables all permissions
1	Allow low resolution printing
2	Allow changing the document
3	Allow content copying or extraction

OXS.ECO Transformation Server Version 2.5 User Guide and Reference property.(Version)

User's Guide and Reference -Plugins

Maas Holding GmbH / Print Date: 2025-01-06

4	Allow authoring comments and form fields
5	Allow form field fill-in or signing
6	Allow content accessibility
7	Allow document assembly
8	Allow high quality printing

SOAP Response

The output should look as follows:

```
<soap:Envelope
  xmlns:soap="http://schemas.xmlsoap.org/soap/envelope/"
  xmlns:xsi="http://www.w3.org/2001/XMLSchema-instance"
  xmlns:xsd="http://www.w3.org/2001/XMLSchema">
  <soap:Header/>
  <soap:Body>
    <ox:ResponseMessage xmlns:ox="http://oxseed.com/services/">
      <responseData>M3k7JVBERi0xLjIKJdTbweIKMS</responseData>
      <responseStatus>Done|Error</responseStatus>
      <responseStatusDescription/>
    </ox:ResponseMessage>
  </soap:Body>
</soap:Envelope>
```

Code Block 14 pdf2securepdf Response

where

- <responseData> contains the output document data encoded in base64, in case of successful transformation.
- <responseStatus> contains the status of transformation. Possible values are 'Done' or 'Error'.
- <responseStatusDescription> contains the error description.

SOAP Request

In order to run the PDF merge transformation, such a SOAP Request has to be sent to OTS:

```
<?xml version='1.0' encoding='UTF-8'?>
<soapenv:Envelope xmlns:soapenv="http://schemas.xmlsoap.org/soap/envelope/">
  <soapenv:Header />
  <soapenv:Body>
    <ns1:merge xmlns:ns1="http://oxseed.com/services/">
      <ns1:RequestMergeMessage>
        <inputList>

        <source>/mnt/afp2webdata/test/customertest/sanlam/octp/testdaten/sample-
```

OXS.ECO Transformation Server Version 2.5 User Guide and Reference property.(Version)

User's Guide and Reference -Plugins

Maas Holding GmbH / Print Date: 2025-01-06

```

secure.pdf</source>
        <ownerpw>mht</ownerpw>
        <userpw>mht</userpw>
    </inputList>
    <inputList>

<source>/mnt/afp2webdata/test/customertest/sanlam/octp/testdaten/sample-
secure.pdf</source>
        <ownerpw>mht</ownerpw>
        <userpw>mht</userpw>
    </inputList>
    <output>
        <type>mergedpdf</type>
        <ownerpw>oxdoxd</ownerpw>
        <userpw>oxd</userpw>
        <flags>1|2|3|4|5|6</flags>

    </output>
</ns1:RequestMergeMessage>
</ns1:merge>
</soapenv:Body>
</soapenv:Envelope>

```

Code Block 15 MergePDF Request

where

- <inputList><source> is absolute path of input pdf file. This file must exist and accessible from OTS server.
- <inputList><ownerpw> is owner password of the input pdf document.
- <inputList><userpw> is user password of the input pdf document.
- <inputList><document> is data of the input pdf document.
- <outut><type> is always 'mergedpdf'.
- <output><ownerpw> is owner password of the output pdf document.
- <output><userpw> is user password of the output pdf document.
- <output><flas> is permission flags applied on output pdf document. Values are separated by '|'. Refer 'Permission Flags' table below.

Permission Flags

Flag	Description
0	Disables all permissions
1	Allow low resolution printing
2	Allow changing the document
3	Allow content copying or extraction
4	Allow authoring comments and form fields

OXS.ECO Transformation Server Version 2.5 User Guide and Reference property.(Version)

User's Guide and Reference -Plugins

Maas Holding GmbH / Print Date: 2025-01-06

5	Allow form field fill-in or signing
6	Allow content accessibility
7	Allow document assembly
8	Allow high quality printing

SOAP Response

The output should look as follows:

```
<soap:Envelope
  xmlns:soap="http://schemas.xmlsoap.org/soap/envelope/"
  xmlns:xsi="http://www.w3.org/2001/XMLSchema-instance"
  xmlns:xsd="http://www.w3.org/2001/XMLSchema">
  <soap:Header/>
  <soap:Body>
    <ox:ResponseMessage xmlns:ox="http://oxseed.com/services/">
      <responseData>JVBERi0xLjIKJdTBweIKMS</responseData>
      <responseStatus>Status</responseStatus>
      <responseStatusDescription/>
    </ox:ResponseMessage>
  </soap:Body>
</soap:Envelope>
```

Code Block 16 MergePDF Response

where

- <responseData> contains the output document data encoded in base64, in case of successful transformation.
- <responseStatus> contains the status of transformation. Possible values are 'Done' or 'Error'.
- <responseStatusDescription> contains the error description.

SOAP Request

In order to run the HTML2Any transformation, set the XML <input><type> tag to 'mht' and the XML <output><type> tag to 'pdf' resp. 'tif' as shown below:

```
<?xml version='1.0' encoding='UTF-8'?>
<soapenv:Envelope xmlns:soapenv="http://schemas.xmlsoap.org/soap/envelope/">
  <soapenv:Header/>
  <soapenv:Body>
    <ns1:transform xmlns:ns1="http://oxseed.com/services/">
      <ns1:RequestTransformMessage>
        <input xmlns:xsi="http://www.w3.org/2001/XMLSchema-instance"
```

OXS.ECO Transformation Server Version 2.5 User Guide and Reference property.(Version)

User's Guide and Reference -Plugins

Maas Holding GmbH / Print Date: 2025-01-06

```

xsi:type="ns1:InputObjectTransform">

    <document>A3ZYci9saWIvYXBhY2hlMi9kYXRhL3NhbXBsZXMvYmlnZmlsZXRlc3QuYWZw</docum
ent>

        <type>mht</type>
    </input>
    <output>
        <type>pdf</type>
    </output>
</ns1:RequestTransformMessage>
</ns1:transform>
</soapenv:Body>
</soapenv:Envelope>
<soapenv:Header/>

```

Code Block 17 Office2any Request

where

- <input><document> is data of the HTML input document, encoded in base64.
- <input><type> is the input document type. Refer to "Input/Output Parameter Types" table below.
- <output><type> is output document type. Refer to "Input/Output Parameter Types" table below.

Input/Output Parameter Types

Conversion	Input Type	Output Type
Html to PDF	mht	pdf
Html to TIFF	mht	tif

SOAP Response

The output should look as follow:

```

<soap:Envelope
  xmlns:soap="http://schemas.xmlsoap.org/soap/envelope/"
  xmlns:xsi="http://www.w3.org/2001/XMLSchema-instance"
  xmlns:xsd="http://www.w3.org/2001/XMLSchema">
  <soap:Header/>
  <soap:Body>
    <ox:ResponseMessage xmlns:ox="http://oxseed.com/services/">
      <responseData>Z3H7JVBERi0xLjIKJdTbweIKMS</responseData>
      <responseStatus>Done|Error</responseStatus>
      <responseStatusDescription/>
    </ox:ResponseMessage>
  </soap:Body>
</soap:Envelope>

```

Code Block 18 Office2any Response

OXS.ECO Transformation Server Version 2.5 User Guide and Reference property.(Version)

User's Guide and Reference -Plugins

Maas Holding GmbH / Print Date: 2025-01-06

where

- <responseData> contains the output document data encoded in base64, in case of successful transformation.
- <responseStatus> contains the status of transformation. Possible values are 'Done' or 'Error'.
- <responseStatusDescription> contains the error description in case of error.

Transformation Options

The wkhtmltopdf command line tool provides many transformation options for HTML to PDF generation. Refer to [wkhtmltopdf](#).

These options can be specified in "MHT2PDF" and "MHT2TIF" JSON objects in /opt/OTS/conf/OTSScenarioConf.js using 'lowerCamelCase' convention where the first letter of the entire word is lowercase, but subsequent first letters are uppercase. Refer to the example below.

```
"MHT2PDF": "HTML 2 PDF Conversion",
"MHT2PDF": {
  "props": "Options for PDF generation. Refer to
http://madalgo.au.dk/~jakobt/wkhtmltoxdoc/wkhtmltopdf_0.10.0_rc2-doc.html.",
  "props": "Options are specified using lowerCamelCase convention where the
first letter of the entire word is lowercase, but subsequent first letters are
uppercase.",
  "props": "Example. If wkhtml2pdf tool option is --page-size, it should be
specified as given below",
  "props": {
    "pageSize": "letter",
    "orientation": "Landscape"
  }
}
```

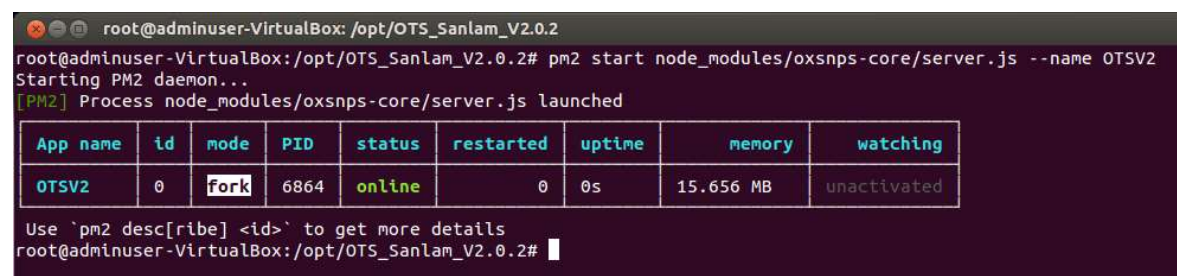
3.5 Starting / Stopping the OXS.ECO Transformation Server

To start the OXS.ECO Transformation Server execute the following commands

```
cd /opt/OTS
export LD_LIBRARY_PATH=/usr/lib/jvm/java-11-openjdk-11.0.16.1.1-
1.el7_9.x86_64/lib:/opt/OTS/node_modules/oxsnps-qpdf/qpdf/lib64
pm2 start node_modules/oxsnps-core/server.js --name OTSV2
```

Code Block 19 Starting OTS

If you get the following output on the console, OTS has been started successfully.



```
root@adminuser-VirtualBox: /opt/OTS_Sanlam_V2.0.2
root@adminuser-VirtualBox:/opt/OTS_Sanlam_V2.0.2# pm2 start node_modules/oxsnps-core/server.js --name OTSV2
Starting PM2 daemon...
[PM2] Process node_modules/oxsnps-core/server.js launched
```

App name	id	mode	PID	status	restarted	uptime	memory	watching
OTSV2	0	Fork	6864	online	0	0s	15.656 MB	unactivated

```
Use 'pm2 desc[ribe] <id>' to get more details
root@adminuser-VirtualBox:/opt/OTS_Sanlam_V2.0.2#
```

OXS.ECO Transformation Server Version 2.5 User Guide and Reference property.(Version)

User's Guide and Reference -Starting / Stopping the OXS.ECO Transformation Server

You can also check the log file by running:

```
pm2 logs OTSV2
```

Code Block 20 Checking OTS Log

or

```
tail -f /var/log/nps/npsServer.log
```

Code Block 21 Checking OTS Log

The output should look as follow.

```
root@adminuser-VirtualBox:/opt/OTS_Sanlam_V2.0.2# tail -f
/var/log/nps/npsServer.log
                                Hostname: adminuser-VirtualBox, linux x64 3.11.0-20-
generic
                                Average Load: 0.208984375,0.11474609375,0.12841796875
                                Total Mem.: 5.83GB, Free Mem.: 4.15GB.
                                CPU 1, Model: Intel(R) Core(TM) i7-3520M CPU @
2.90GHz
                                CPU 2, Model: Intel(R) Core(TM) i7-3520M CPU @
2.90GHz
                                Network Interfaces: eth3: 172.15.0.15
[2015-07-21 10:33:19.740] [INFO] oxsnps-segserver -      Plugin oxsnps-segserver
v2.0.9 initialized
[2015-07-21 10:33:19.758] [INFO] oxsnps-pdf2pdf -      Plugin oxsnps-pdf2pdf
v2.2.1 initialized
[2015-07-21 10:34:30.194] [INFO] oxsnps-msoffice2any -  Plugin oxsnps-
msoffice2any v2.2.1 initialized
[2015-07-21 10:34:30.197] [INFO] npsServer - OXSEED Transformation Server v2.0.2
is listening on port 80

[2022-10-18 17:28:29.651] [INFO] OTS - Starting OXS.ECO Transformation Server...
[2022-10-18 17:28:29.653] [INFO] OTS - Server Info - Hardware:
                                Hostname: LM20, linux x64 5.4.0-128-
generic
                                Average Load: 0.1,0.04,0.04
                                Total Mem.: 5.80GB, Free Mem.:
2.90GB.
                                CPU 1, Model: 11th Gen Intel(R)
Core(TM) i7-1165G7 @ 2.80GHz
                                CPU 2, Model: 11th Gen Intel(R)
Core(TM) i7-1165G7 @ 2.80GHz
                                Network Interfaces: enp0s3:
10.0.2.15enp0s8: 192.168.178.107
[2022-10-18 17:28:29.654] [INFO] OTS - Server Info - Environment:
                                COLORTERM=truecolor
                                DISPLAY=:0.0
                                ...
[2022-10-18 17:28:29.657] [INFO] OTS - Server Info - Hosts (/etc/hosts):
```

OXS.ECO Transformation Server Version 2.5 User Guide and Reference `property.(Version)`

User's Guide and Reference -Starting / Stopping the OXS.ECO Transformation Server

Maas Holding GmbH / Print Date: 2025-01-06

```

127.0.0.1    localhost
...
[2022-10-18 17:28:29.774] [INFO] core - --->cleanTempDir: Cleaning the temp
directory (/tmp/nps)...
[2022-10-18 17:28:29.775] [INFO] core - --->cleanTempDir: Temp directory
(/tmp/nps) cleaned.
[2022-10-18 17:28:29.777] [INFO] pluginManager - -->Enabling Plugins...
[2022-10-18 17:28:29.782] [INFO] oxsnps-afp2any -      Plugin oxsnps-afp2any
v2.0.22 initialized
[2022-10-18 17:28:29.784] [INFO] oxsnps-html2any -      Plugin oxsnps-
html2any v1.0.7 initialized
[2022-10-18 17:28:29.785] [INFO] oxsnps-pdf2pdf -      Plugin oxsnps-pdf2pdf
v2.2.4 initialized
[2022-10-18 17:28:29.789] [INFO] oxsnps-soap -      Plugin oxsnps-
soap v2.0.7 initialized
[2022-10-18 17:28:29.795] [INFO] pluginManager - -->Activating Plugins...
[2022-10-18 17:28:29.796] [INFO] OTS - OXS.ECO Transformation Server v2.5.0 is
listening on port 80

```

To stop the OXSEED Transformation Server, execute the following commands. For more information about the pm2 commands refer to <https://github.com/Unitech/PM2/>

```
pm2 delete OTSV2
```

3.6 About Splitting OXS.ECO Transformation Server Log Files

To avoid to have to handle large log files, Linux provides the **logrotate** command that allows to split log files daily, monthly or yearly. To do so, create a /etc/logrotate.d/ots.log file and add the following configuration to it:

```

/var/log/nps/*.log {
    daily
    rotate 60
    missingok
    notifempty
    compress
    delaycompress
    sharedscripts
    copytruncate
    dateext
    dateformat %Y-%m-%d.
}

```

Code Block 22 OTS Logrotate Definition File

where

- /var/log/nps/*.log specifies which log files to rotate
- daily specifies to rotate the log files daily
- rotate 60 specifies to keep up 60 old log files

OXS.ECO Transformation Server Version 2.5 User Guide and Reference property.(Version)

User's Guide and Reference -About Splitting OXS.ECO Transformation Server Log Files

Maas Holding GmbH / Print Date: 2025-01-06

- `missingok` specifies that if the log file doesn't exist it's not an issue
- `notifempty` specifies to ignore empty files
- `compress` specifies to compress the rotated log file with gzip
- `delaycompress` specifies to postpone the compression of the previous log file to the next rotation cycle
- `sharedscripts` specifies that the **prescript** and **postsript** scripts should run once only,
- `copytruncate` is needed for forever to work properly
- `dateext` specifies to add the date to filename
- `dateformat %Y-%m-%d` specifies the date format

To activate this configuration run the following command

```
logrotate -s /var/log/logstatus /etc/logrotate.conf
```

Code Block 23 Activating OTS Logrotate Definition File

For further details about the **logrotate** command, please refer to the links below:

1. http://linuxcommand.org/man_pages/logrotate8.html
2. <http://stackoverflow.com/questions/15231968/nodejs-forever-archive-logs>
3. <http://www.thegeekstuff.com/2010/07/logrotate-examples/>

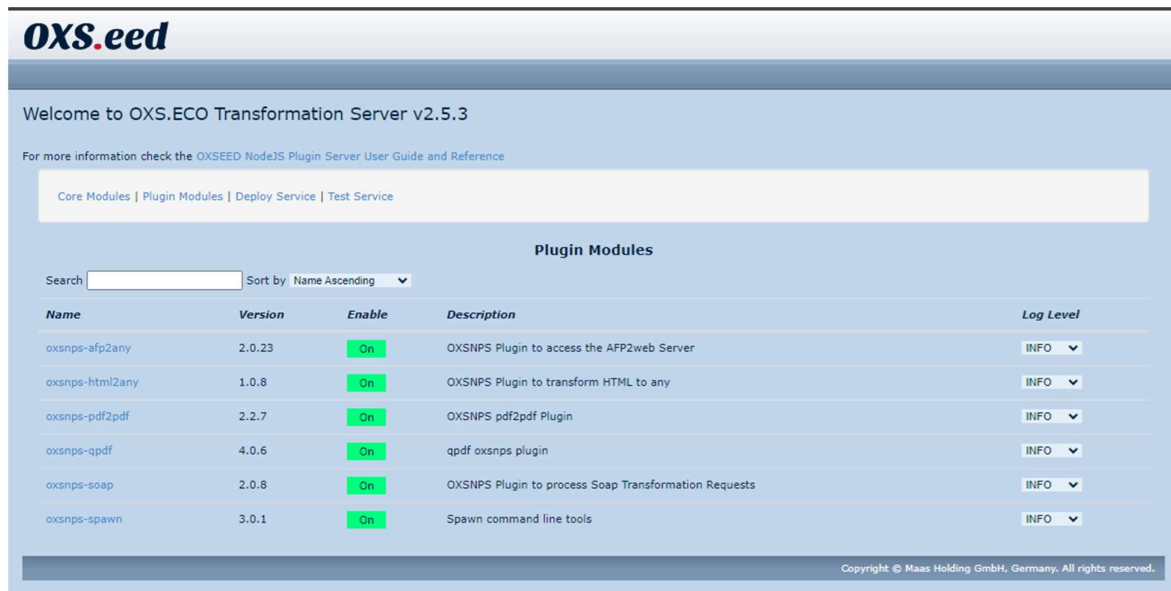
3.7 Testing the OXS.ECO Transformation Server

In order to test the OXS.ECO Transformation Server, type in your favourite browser:

http://<server>:<port>

This should display the OXS.ECO Transformation Server Version as well as the version of the installed plugins.

If the output looks similar to the one below, the OXS.ECO Transformation Server is running and ready to process requests.

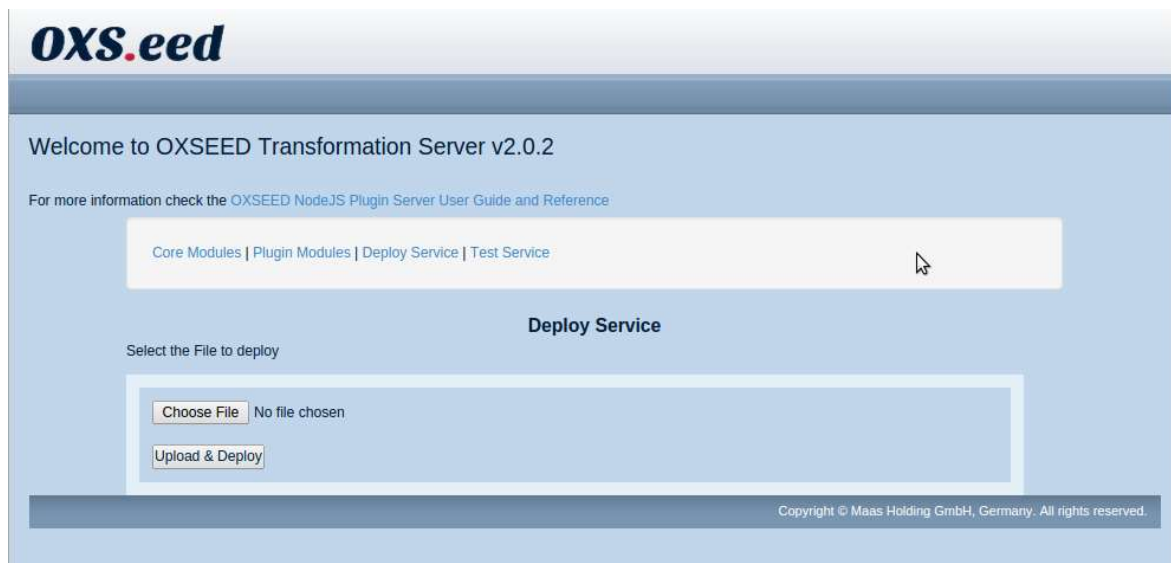


3.8 Updating the OXS.ECO Transformation Server and Plugins

In order to update the OXS.ECO Transformation Server, type in your favourite browser:

http://<server>:<port>/deploy

This should display something similar to the following.



- Click **Browse...** and select the OXS.ECO Transformation Server release file to deploy.
- Click **Upload & Deploy** to deploy.

The OXS.ECO Transformation Server will then deploy the selected release and finally restart.

OXS.ECO Transformation Server Version 2.5 User Guide and Reference property.(Version)

User's Guide and Reference -Updating the OXS.ECO Transformation Server and Plugins

Maas Holding GmbH / Print Date: 2025-01-06

4 List of public URLs

The table below describes all the OTS public URLs

URL	Description	Since Version
<server>:<port>/	displays the welcome to OTS page. It displays the OTS version as well as the version of its core modules and plugins	1.3.5u14
<server>:<port>/doc	displays the list of the available user guides	1.3.5u4
<server>:<port>/log	displays the content of the log directory	1.3.5u4
<server>:<port>/version	displays the welcome to OTS page. It displays the OTS version as well as the version of its core modules and plugins	1.3.4
<server>:<port>/history	displays OTS history.txt	1.3.5u17
<server>:<port>/transformservice	requests a synchronous transformation of either AFP2web supported documents, MS Office documents, secure PDFs or merge PDFs, using SOAP requests.	2.0.2
<server>:<port>/services/soap/transform	requests a synchronous transformation of either AFP2web supported documents, MS Office documents, secure PDFs or merge PDFs, using SOAP requests.	2.0.2
<server>:<port>/services/soap/asynctransform	requests an asynchronous transformation of AFP2web supported documents, using SOAP requests.	2.0.2
<server>:<port>/services/soap/status	returns the status of an asynchronous transformations of AFP2web supported documents, using SOAP requests.	2.0.2
<server>:<port>/backup	displays the list of the backup files found in the backups directory	1.3.5u16

List of Figures

No table of figures entries found.

List of Tables

No table of figures entries found.

I n d e x

No index entries found.